

WYCLIFFE TRACT E

(PART OF WYCLIFFE GOLF AND COUNTRY CLUB, FORMERLY KNOWN AS SUNDIAL COUNTRY CLUB, P.U.D.)
BEING A REPLAT OF ALL OF TRACT E, AND A PORTION OF TRACT P, WYCLIFFE PLAT ONE, PLAT BOOK 62, PAGES 8-13,
LYING IN SECTION 25, TOWNSHIP 44 SOUTH, RANGE 41 EAST, PALM BEACH COUNTY, FLORIDA.

DEDICATION:

STATE OF FLORIDA)
) SS
COUNTY OF PALM BEACH)

KNOW ALL MEN BY THESE PRESENTS THAT, SUNDIAL JOINT VENTURE, A FLORIDA GENERAL PARTNERSHIP, OWNERS OF THE LAND SHOWN HEREON AS "WYCLIFFE TRACT E", SITUATE IN SECTION 25, TOWNSHIP 44 SOUTH, RANGE 41 EAST, PALM BEACH COUNTY, FLORIDA, AND BEING A REPLAT OF ALL OF TRACT E AND A PORTION OF TRACT P, WYCLIFFE PLAT ONE, ACCORDING TO THE PLAT THEREOF AS RECORDED IN PLAT BOOK 62, PAGES 8, THROUGH 13, INCLUSIVE, PUBLIC RECORDS, PALM BEACH COUNTY, FLORIDA; SAID PARCEL OF LAND BEING MORE PARTICULARLY DESCRIBED AS FOLLOWS:

COMMENCING AT THE SOUTHERNMOST TERMINUS OF THE CENTERLINE OF ROYAL PALM DEVON WAY, AS SHOWN ON SAID PLAT OF WYCLIFFE PLAT ONE, SAID POINT BEING THE RADIUS POINT OF THE 50 FOOT CUL-DE-SAC RIGHT OF WAY FOR SAID ROYAL PALM DEVON WAY; THENCE, SOUTH 24°16'36" WEST, RADIAL TO SAID ROYAL PALM DEVON WAY CUL-DE-SAC RIGHT OF WAY, A DISTANCE OF 50.00 FEET TO A BOUNDARY CORNER OF SAID TRACT E AND THE POINT OF BEGINNING (P.O.B.)

THENCE, SOUTH 14°07'00" WEST, ALONG THE BOUNDARY OF SAID TRACT E, A DISTANCE OF 64.24 FEET TO THE POINT OF CURVATURE OF A CURVE TO THE RIGHT, HAVING A RADIUS OF 90.00 FEET; THENCE, SOUTHWESTERLY ALONG SAID CURVE AND CONTINUING ALONG THE BOUNDARY OF SAID TRACT E THROUGH A CENTRAL ANGLE OF 42°19'22"; A DISTANCE OF 86.48 FEET TO A POINT OF REVERSE CURVATURE HAVING A RADIUS OF 48.36 FEET; THENCE, SOUTHWESTERLY ALONG SAID CURVE AND DEPARTING THE BOUNDARY OF SAID TRACT E, THROUGH A CENTRAL ANGLE OF 24°13'06"; A DISTANCE OF 120.44 FEET TO THE END OF SAID CURVE; THENCE, SOUTH 77°49'39" WEST, ALONG A LINE PARALLEL WITH AND 5 FEET SOUTHERLY OF, AS MEASURED AT RIGHT ANGLES TO THE BOUNDARY OF SAID TRACT E, A DISTANCE OF 107.31 FEET TO THE POINT OF CURVATURE OF A CURVE TO THE LEFT HAVING A RADIUS OF 237.00 FEET; THENCE, SOUTHWESTERLY ALONG SAID CURVE AND CONTINUING ALONG SAID PARALLEL LINE, THROUGH A CENTRAL ANGLE OF 29°28'35"; A DISTANCE OF 121.93 FEET TO THE POINT OF TANGENCY; THENCE, SOUTH 48°21'04" WEST, CONTINUING ALONG SAID PARALLEL LINE, A DISTANCE OF 109.93 FEET TO THE POINT OF CURVATURE OF A CURVE TO THE RIGHT HAVING A RADIUS OF 114.00 FEET; THENCE, WESTERLY ALONG SAID CURVE AND CONTINUING ALONG SAID PARALLEL LINE, THROUGH A CENTRAL ANGLE OF 64°28'35"; A DISTANCE OF 162.05 FEET TO THE POINT OF TANGENCY; THENCE, NORTH 67°10'21" WEST, CONTINUING ALONG SAID PARALLEL LINE, A DISTANCE OF 507.78 FEET; THENCE, NORTH 52°08'24" WEST, CONTINUING ALONG SAID PARALLEL LINE, A DISTANCE OF 59.92 FEET; THENCE, NORTH 43°58'10" WEST, CONTINUING ALONG SAID PARALLEL LINE, A DISTANCE OF 23.12 FEET TO A POINT OF NON-TANGENT CURVATURE OF A CURVE CONCAVE NORTHEASTERLY, HAVING A RADIUS OF 376.42 FEET AND WHOSE RADIUS POINT BEARS NORTH 51°28'13" EAST; THENCE, NORTHWESTERLY ALONG SAID CURVE AND CONTINUING ALONG SAID PARALLEL LINE, THROUGH A CENTRAL ANGLE OF 11°51'11"; A DISTANCE OF 77.87 FEET TO A POINT OF NON-TANGENT CURVATURE OF A CURVE CONCAVE WESTERLY, HAVING A RADIUS OF 207.96 FEET AND WHOSE RADIUS POINT BEARS NORTH 89°06'34" WEST; THENCE, NORTHERLY ALONG SAID CURVE, THROUGH A CENTRAL ANGLE OF 9°35'02"; A DISTANCE OF 34.79 FEET TO THE POINT OF TANGENCY, SAID POINT BEING ON THE BOUNDARY OF SAID TRACT E; THENCE, NORTH 08°41'36" WEST, ALONG SAID BOUNDARY LINE, AND ITS NORTHERLY PROLONGATION, A DISTANCE OF 166.39 FEET TO A POINT OF NON-TANGENT CURVATURE OF A CURVE CONCAVE SOUTHEASTERLY, HAVING A RADIUS OF 255.00 FEET AND WHOSE RADIUS POINT BEARS SOUTH 87°19'42" EAST; THENCE, NORTHEASTERLY ALONG SAID CURVE AND ALONG A LINE PARALLEL WITH AND 5 FEET WESTERLY OF, AS MEASURED RADIAL TO THE BOUNDARY OF SAID TRACT E, THROUGH A CENTRAL ANGLE OF 32°10'49"; A DISTANCE OF 143.22 FEET TO THE POINT OF TANGENCY; THENCE, NORTH 34°51'06" EAST, CONTINUING ALONG SAID PARALLEL LINE, A DISTANCE OF 243.48 FEET; THENCE, NORTH 30°32'12" EAST, CONTINUING ALONG SAID PARALLEL LINE, A DISTANCE OF 319.08 FEET TO THE POINT OF CURVATURE OF A CURVE TO THE RIGHT HAVING A RADIUS OF 255.00 FEET; THENCE, NORTHEASTERLY ALONG SAID CURVE AND CONTINUING ALONG SAID PARALLEL LINE, THROUGH A CENTRAL ANGLE OF 19°39'38"; A DISTANCE OF 87.50 FEET TO A POINT OF NON-TANGENT CURVATURE OF A CURVE CONCAVE NORTHWESTERLY, HAVING A RADIUS OF 214.15 FEET AND WHOSE RADIUS POINT BEARS NORTH 22°59'35" WEST; THENCE, NORTHEASTERLY ALONG SAID CURVE, THROUGH A CENTRAL ANGLE OF 9°08'31"; A DISTANCE OF 34.17 FEET TO A POINT OF REVERSE CURVATURE OF A CURVE HAVING A RADIUS OF 250.00 FEET; SAID POINT BEING ON THE BOUNDARY OF SAID TRACT E; THENCE, NORTHEASTERLY ALONG SAID CURVE AND ALONG THE BOUNDARY OF SAID TRACT E, THROUGH A CENTRAL ANGLE OF 17°21'56"; A DISTANCE OF 75.77 FEET TO A POINT OF COMPOUND CURVATURE HAVING A RADIUS OF 486.28 FEET; THENCE, EASTERLY ALONG SAID CURVE AND ALONG SAID BOUNDARY LINE, THROUGH A CENTRAL ANGLE OF 17°00'58"; A DISTANCE OF 144.42 FEET TO THE POINT OF TANGENCY; THENCE, SOUTH 87°45'12" EAST, CONTINUING ALONG SAID BOUNDARY, A DISTANCE OF 43.96 FEET; THENCE, SOUTH 77°19'38" EAST, CONTINUING ALONG SAID BOUNDARY, A DISTANCE OF 57.88 FEET TO THE POINT OF CURVATURE OF A CURVE TO THE RIGHT HAVING A RADIUS OF 180.00 FEET; THENCE, SOUTHEASTERLY ALONG SAID CURVE AND CONTINUING ALONG SAID BOUNDARY, THROUGH A CENTRAL ANGLE OF 23°32'32"; A DISTANCE OF 53.42 FEET TO A POINT OF REVERSE CURVATURE OF A CURVE HAVING A RADIUS OF 90.00 FEET; THENCE, SOUTHEASTERLY ALONG SAID CURVE AND DEPARTING SAID BOUNDARY, THROUGH A CENTRAL ANGLE OF 14°51'49"; A DISTANCE OF 23.35 FEET TO A POINT OF NON-TANGENT CURVATURE OF A CURVE CONCAVE SOUTHWESTERLY, HAVING A RADIUS OF 135.00 FEET AND WHOSE RADIUS POINT BEARS SOUTH 46°03'41" WEST; THENCE, SOUTHEASTERLY ALONG SAID CURVE AND ALONG A LINE PARALLEL WITH AND 5 FEET EASTERLY OF, AS MEASURED RADIAL TO THE BOUNDARY OF SAID TRACT E, THROUGH A CENTRAL ANGLE OF 35°30'48"; A DISTANCE OF 83.68 FEET TO A POINT OF COMPOUND CURVATURE OF A CURVE HAVING A RADIUS OF 1378.28 FEET; THENCE, SOUTHERLY ALONG SAID CURVE AND CONTINUING ALONG SAID PARALLEL LINE, THROUGH A CENTRAL ANGLE OF 08°01'41"; A DISTANCE OF 193.12 FEET TO THE POINT OF TANGENCY; THENCE, SOUTH 00°23'50" EAST, CONTINUING ALONG SAID PARALLEL LINE, A DISTANCE OF 78.87 FEET; THENCE, SOUTH 10°51'45" WEST, CONTINUING ALONG SAID PARALLEL LINE, A DISTANCE OF 149.68 FEET TO THE POINT OF CURVATURE OF A CURVE TO THE LEFT HAVING A RADIUS OF 183.90 FEET; THENCE, SOUTHEASTERLY ALONG SAID CURVE AND CONTINUING ALONG SAID PARALLEL LINE, THROUGH A CENTRAL ANGLE OF 109°20'22"; A DISTANCE OF 348.3 FEET TO THE POINT OF TANGENCY; THENCE, NORTH 61°12'31" EAST, CONTINUING ALONG SAID PARALLEL LINE, A DISTANCE OF 62.52 FEET TO THE INTERSECTION THEREOF WITH THE WEST RIGHT OF WAY LINE OF ROYAL PALM DEVON WAY AS SHOWN ON SAID PLAT OF WYCLIFFE PLAT ONE; SAID POINT BEING A POINT OF NON-TANGENT CURVATURE OF A CURVE CONCAVE EASTERLY HAVING A RADIUS OF 832.90 FEET AND WHOSE RADIUS POINT BEARS SOUTH 87°46'03" EAST; THENCE, SOUTHERLY ALONG SAID CURVE AND ALONG SAID RIGHT OF WAY LINE, THROUGH A CENTRAL ANGLE OF 6°38'38"; A DISTANCE OF 96.58 FEET TO A POINT OF REVERSE CURVATURE OF A CURVE HAVING A RADIUS OF 25.00 FEET; THENCE, SOUTHERLY ALONG SAID CURVE AND CONTINUING ALONG SAID RIGHT OF WAY LINE, THROUGH A CENTRAL ANGLE OF 47°16'19"; A DISTANCE OF 20.83 FEET TO A POINT OF REVERSE CURVATURE OF A CURVE HAVING A RADIUS OF 50.00 FEET; THENCE, SOUTHEASTERLY ALONG SAID CURVE AND CONTINUING ALONG SAID RIGHT OF WAY LINE, THROUGH A CENTRAL ANGLE OF 108°35'01"; A DISTANCE OF 94.76 FEET TO THE END OF SAID CURVE AND THE POINT OF BEGINNING (P.O.B.)

CONTAINING: 20.70 ACRES, MORE OR LESS.

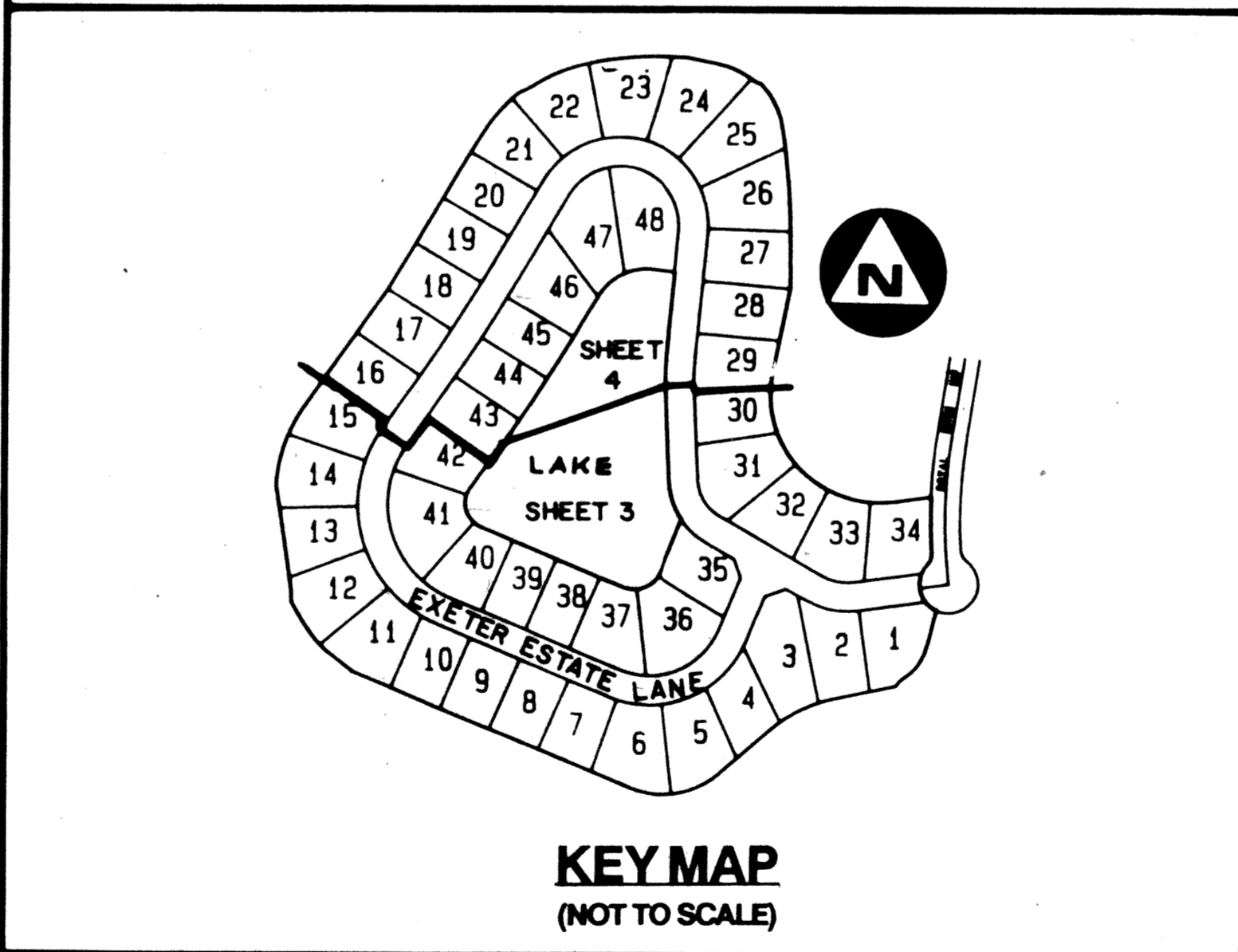
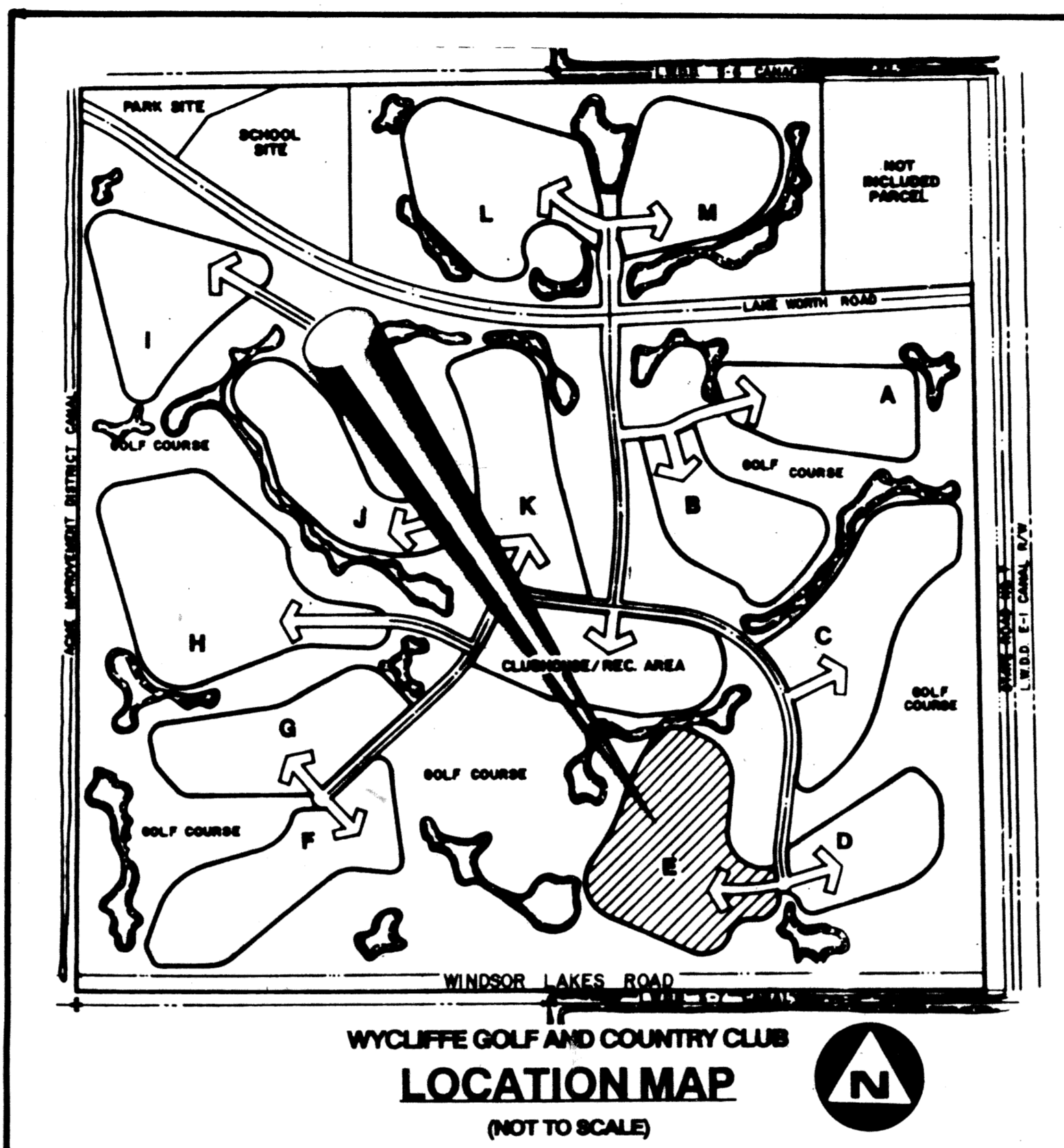
HAVE CAUSED THE SAME TO BE SURVEYED AND PLATTED AS SHOWN HEREON AND DO HEREBY DEDICATE AS FOLLOWS:

- TRACT N, THE TRACT FOR PRIVATE ROAD PURPOSES, AS SHOWN HEREON IS HEREBY DEDICATED TO WYCLIFFE COMMUNITY ASSOCIATION, INC., A FLORIDA NOT-FOR-PROFIT CORPORATION, ITS SUCCESSORS AND ASSIGNS, FOR INGRESS, EGRESS, UTILITY, DRAINAGE AND OTHER PROPER PURPOSES AND IS THE PERPETUAL MAINTENANCE OBLIGATION OF SAID ASSOCIATION, ITS SUCCESSORS AND ASSIGNS, WITHOUT RECOURSE TO PALM BEACH COUNTY.
- TRACT L, THE WATER MANAGEMENT TRACT, AS SHOWN HEREON, IS HEREBY DEDICATED TO WYCLIFFE COMMUNITY ASSOCIATION, INC., A FLORIDA NOT-FOR-PROFIT CORPORATION, ITS SUCCESSORS AND ASSIGNS, FOR WATER MANAGEMENT, DRAINAGE EASEMENT AND OTHER PROPER PURPOSES AND ARE THE PERPETUAL MAINTENANCE OBLIGATION OF SAID ASSOCIATION, ITS SUCCESSORS AND ASSIGNS, WITHOUT RECOURSE TO PALM BEACH COUNTY.
- THE LANDSCAPE EASEMENT, AS SHOWN HEREON, IS HEREBY DEDICATED TO, AND SHALL BE THE PERPETUAL MAINTENANCE OBLIGATION OF WYCLIFFE COMMUNITY ASSOCIATION, INC., A FLORIDA NOT-FOR-PROFIT CORPORATION, ITS SUCCESSORS AND ASSIGNS, FOR LANDSCAPING AND OTHER PROPER PURPOSES, WITHOUT RECOURSE TO PALM BEACH COUNTY.
- THE 20' LAKE MAINTENANCE EASEMENTS (L.M.E.), AS SHOWN HEREON, ARE HEREBY DEDICATED TO WYCLIFFE COMMUNITY ASSOCIATION, INC., A FLORIDA NOT-FOR-PROFIT CORPORATION, ITS SUCCESSORS AND ASSIGNS, FOR MAINTENANCE AND DRAINAGE EASEMENT PURPOSES AND ARE THE PERPETUAL MAINTENANCE OBLIGATION OF SAID ASSOCIATION, ITS SUCCESSORS AND ASSIGNS, WITHOUT RECOURSE TO PALM BEACH COUNTY.
- THE UTILITY EASEMENTS AS SHOWN HEREON ARE HEREBY DEDICATED IN PERPETUITY FOR THE CONSTRUCTION AND MAINTENANCE OF UTILITY FACILITIES (INCLUDING CABLE TELEVISION SYSTEMS).
- THE DRAINAGE EASEMENTS SHOWN HEREON ARE HEREBY DEDICATED IN PERPETUITY FOR THE CONSTRUCTION AND MAINTENANCE OF DRAINAGE FACILITIES AND SHALL BE THE MAINTENANCE OBLIGATION OF WYCLIFFE COMMUNITY ASSOCIATION, INC., A FLORIDA NOT-FOR-PROFIT CORPORATION, ITS SUCCESSORS AND ASSIGNS, WITHOUT RECOURSE TO PALM BEACH COUNTY.
- PALM BEACH COUNTY SHALL HAVE THE RIGHT, BUT NOT THE OBLIGATION, TO MAINTAIN ANY PORTION OF THE DRAINAGE SYSTEM ENCOMPASSED BY THIS PLAT WHICH IS ASSOCIATED WITH THE DRAINAGE OF PUBLIC ROADS.
- THE ACME UTILITY EASEMENTS (A.U.E.) AS SHOWN HEREON ARE HEREBY DEDICATED EXCLUSIVELY TO ACME IMPROVEMENT DISTRICT IN PERPETUITY FOR THE CONSTRUCTION AND MAINTENANCE OF UTILITY FACILITIES.
- THE LAKE MAINTENANCE ACCESS EASEMENTS, AS SHOWN HEREON, ARE HEREBY DEDICATED TO WYCLIFFE COMMUNITY ASSOCIATION, INC., A FLORIDA NOT-FOR-PROFIT CORPORATION, ITS SUCCESSORS AND ASSIGNS, FOR MAINTENANCE AND DRAINAGE EASEMENT PURPOSES AND ARE THE PERPETUAL MAINTENANCE OBLIGATION OF SAID ASSOCIATION, ITS SUCCESSORS AND ASSIGNS, WITHOUT RECOURSE TO PALM BEACH COUNTY.

IN WITNESS WHEREOF, SUNDIAL JOINT VENTURE HAS CAUSED THESE PRESENTS TO BE SIGNED BY THIS GENERAL PARTNERS, SUNDIAL ASSOCIATES OF PALM BEACH, A FLORIDA GENERAL PARTNERSHIP, AND CMSB ENTERPRISES OF FLORIDA, INC., A FLORIDA CORPORATION, THIS 25th DAY OF MAY, 1989.

SUNDIAL JOINT VENTURE, A FLORIDA GENERAL PARTNERSHIP

BY: SUNDIAL ASSOCIATES OF PALM BEACH, A FLORIDA GENERAL PARTNERSHIP, AS GENERAL PARTNER.
BY: TRIPLE J U.S., INC., A FLORIDA CORPORATION, AS GENERAL PARTNER OF SUNDIAL ASSOCIATES OF PALM BEACH.
ATTEST: *John C. Csapo* JOHN C. CSAPO, SECRETARY BY: *Harvey Geller* HARVEY GELLER, PRESIDENT



ACKNOWLEDGMENT:

STATE OF FLORIDA)
) SS
COUNTY OF PALM BEACH)

BEFORE ME, PERSONALLY APPEARED HARVEY GELLER AND JOHN C. CSAPO, TO ME WELL KNOWN AND KNOWN TO ME TO BE THE INDIVIDUALS DESCRIBED IN AND WHO EXECUTED THE FOREGOING INSTRUMENT AS PRESIDENT AND SECRETARY OF TRIPLE J U.S., INC., A FLORIDA CORPORATION, AND ACKNOWLEDGED TO AND BEFORE ME THAT THEY EXECUTED SAID INSTRUMENT AS SUCH OFFICERS OF SAID CORPORATION, AND THAT THE SEAL AFFIXED HERETO IS THE CORPORATE SEAL OF SAID CORPORATION AND THAT IT WAS AFFIXED HERETO BY DUE AND REGULAR CORPORATE AUTHORITY, AND THAT SAID INSTRUMENT IS THE FREE ACT AND DEED OF SAID CORPORATIONS.

WITNESS MY HAND AND OFFICIAL SEAL THIS 25th DAY OF MAY, 1989.

MY COMMISSION EXPIRES: June 18, 1991

Edaine Brown
NOTARY PUBLIC

IN WITNESS WHEREOF, CMSB ENTERPRISES OF FLORIDA, INC., A FLORIDA CORPORATION, A GENERAL PARTNER OF SUNDIAL JOINT VENTURE, A FLORIDA GENERAL PARTNERSHIP, HAS CAUSED THESE PRESENTS TO BE SIGNED BY ITS PRESIDENT AND ATTESTED TO BY ITS SECRETARY AND ITS CORPORATE SEAL TO BE AFFIXED HERETO BY AND WITH THE AUTHORITY OF THIS BOARD OF DIRECTORS, THIS 25th DAY OF MAY, 1989.

CMSB ENTERPRISES OF FLORIDA, INC.

ATTEST: *Peter M. Brestovan*
PETER M. BRESTOVAN, SECRETARY

BY: *David E.A. Carson*
DAVID E.A. CARSON, PRESIDENT

ACKNOWLEDGMENT:

STATE OF CONNECTICUT)
) SS BRIDGEPORT
COUNTY OF FAIRFIELD)

BEFORE ME PERSONALLY APPEARED DAVID E.A. CARSON AND PETER M. BRESTOVAN, TO ME WELL KNOWN AND KNOWN TO ME TO BE THE INDIVIDUALS DESCRIBED IN AND WHO EXECUTED THE FOREGOING INSTRUMENT AS PRESIDENT AND SECRETARY OF CMSB ENTERPRISES OF FLORIDA, INC., A FLORIDA CORPORATION, AND ACKNOWLEDGED TO AND BEFORE ME THAT THEY EXECUTED SAID INSTRUMENT AS SUCH OFFICERS OF SAID CORPORATION, AND THAT THE SEAL AFFIXED HERETO IS THE CORPORATE SEAL OF SAID CORPORATION AND THAT IT WAS AFFIXED HERETO BY DUE AND REGULAR CORPORATE AUTHORITY, AND THAT SAID INSTRUMENT IS THE FREE ACT AND DEED OF SAID CORPORATIONS.

WITNESS MY HAND AND OFFICIAL SEAL THIS 25th DAY OF May, 1989.

MY COMMISSION EXPIRES: Mar 31, 1992

Benjamin H. Neal
NOTARY PUBLIC

MORTGAGEE'S CONSENT:

STATE OF FLORIDA)
) SS
COUNTY OF St. Lucie)

STRAZZULLA BROS. CO., INC., A FLORIDA CORPORATION, HEREBY CERTIFIES THAT IT IS A HOLDER OF A MORTGAGE UPON THE PROPERTY HEREON DESCRIBED AND DOES HEREBY JOIN IN AND CONSENT TO THE DEDICATION OF SAID LANDS BY THE OWNERS THEREOF, AS SHOWN HEREON, AND AGREES THAT ITS MORTGAGE WHICH IS DESCRIBED IN OFFICIAL RECORD BOOK 578 AT PAGE 617 OF THE PUBLIC RECORDS OF PALM BEACH COUNTY, FLORIDA, SHALL BE SUBORDINATED TO SAID DEDICATION.

IN WITNESS WHEREOF, STRAZZULLA BROS. CO., INC., A FLORIDA CORPORATION, HAS CAUSED THESE PRESENTS TO BE SIGNED BY ITS PRESIDENT AND ATTESTED TO BY ITS SECRETARY, AND ITS CORPORATE SEAL TO BE AFFIXED HERETO BY AND WITH THE AUTHORITY OF ITS BOARD OF DIRECTORS, THIS 19th DAY OF JUNE, 1989.

STRAZZULLA BROS. CO., INC.

ATTEST: *John F. Strazzulla*
JOHN F. STRAZZULLA, SECRETARY

BY: *Joseph P. Strazzulla*
JOSEPH P. STRAZZULLA, PRESIDENT

ACKNOWLEDGMENT:

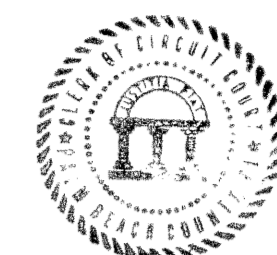
STATE OF FLORIDA)
) SS
COUNTY OF St. Lucie)

BEFORE ME PERSONALLY APPEARED JOSEPH P. STRAZZULLA AND JOHN F. STRAZZULLA, TO ME WELL KNOWN AND KNOWN TO ME TO BE THE INDIVIDUALS DESCRIBED IN AND WHO EXECUTED THE FOREGOING INSTRUMENT AS PRESIDENT AND SECRETARY OF STRAZZULLA BROS. CO., INC., A FLORIDA CORPORATION, AND ACKNOWLEDGED TO AND BEFORE ME THAT THEY EXECUTED SAID INSTRUMENT AS SUCH OFFICERS OF SAID CORPORATION, AND THAT THE SEAL AFFIXED HERETO IS THE CORPORATE SEAL OF SAID CORPORATION AND THAT IT WAS AFFIXED HERETO BY DUE AND REGULAR CORPORATE AUTHORITY, AND THAT SAID INSTRUMENT IS THE FREE ACT AND DEED OF SAID CORPORATION.

WITNESS MY HAND AND OFFICIAL SEAL THIS 19th DAY OF JUNE, 1989.

MY COMMISSION EXPIRES: 7-1-92

James A. Pounds
NOTARY PUBLIC

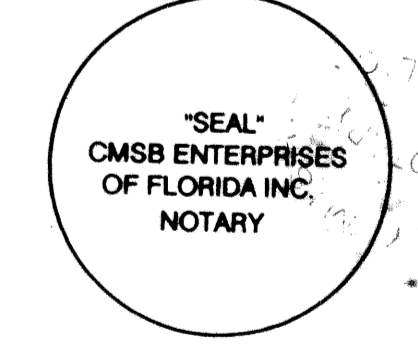
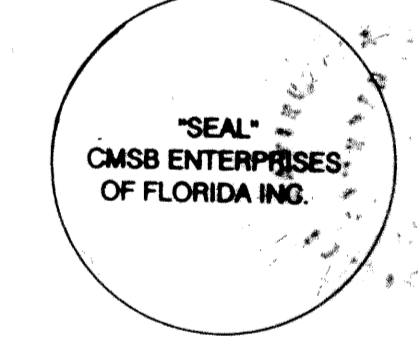
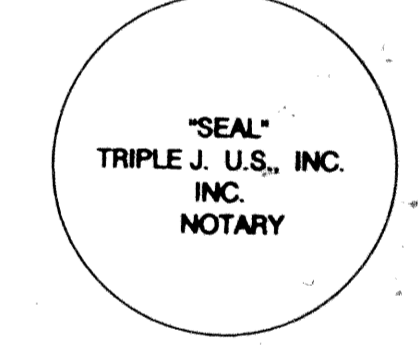
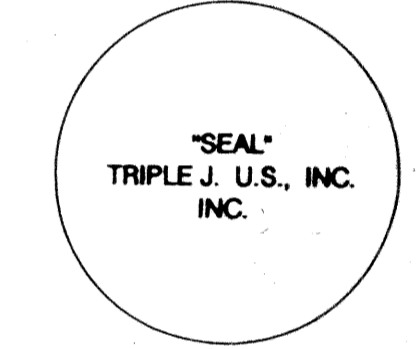


State Of Florida)
) SS
County Of Palm Beach)

This Plat was filed for record at 9:19
A.M., this 7 day of Sep.
A.D., 1989, and duly recorded
in Plat Book 63 on
Page 132 through 135.

John B. Dunkle,
Clerk of the Circuit Court.

By: *Dawn A. Martin*
Deputy Clerk



PAGE 132
FLOOD MAP # 1000
ZONING # 86-104
ZIP CODE 33467
762-737
TOD HOME

0520-005
Ret-86-704
collect
63/132

This instrument was prepared by Wm. R. Van Campen, R.L.S., in and for the offices of Bench Mark Land Surveying & Mapping, Inc., 4152 W. Blue Heron Boulevard Suite 121, Riviera Beach, Florida

BENCH MARK
LAND SURVEYING & MAPPING, INC.
WEST PALM BEACH, FLORIDA - RIVIERA BEACH, FLORIDA

RECORD PLAT
WYCLIFFE TRACT E

OWN	CKD	DATE	WEL. NO.
SCALE	SIZE	PL. P.	SHEET 1 OF 4